

RESTORING THE  
*Sacred Beauty*  
of ST. MARY CHURCH

A MISSION OF FAITH, A LEGACY OF COMMUNITY

*Preserve the Past, Restore the Present, Build the Future*





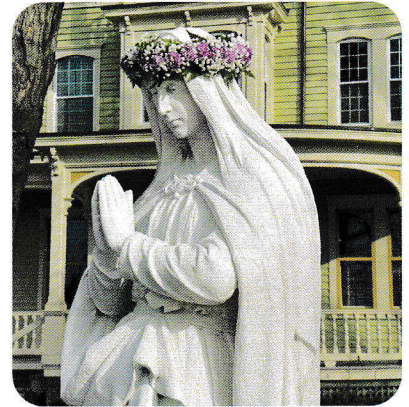
## A PARISH ROOTED IN HISTORY

Founded in **1907**, St. Mary Church was established to serve Stamford's growing **immigrant Catholic community**. It has been a **sanctuary of faith, culture, and service for generations**. Today, it remains a **cornerstone of Stamford's Catholic community**.

### A THRIVING, FAITHFUL COMMUNITY

- + **More than 3,500 parishioners** actively worship at St. Mary each week
- + **Religious education programs** serve over **400 students weekly**
- + **Growing Hispanic and English-speaking youth ministries**
- + **Devotional groups**, including the **Rosary Society** and **adult prayer groups**
- + **Vibrant liturgical life** with **seven weekend Masses**, **daily Adoration**, and **Confession**

Despite its **spiritual vitality**, **financial limitations** and **urgent structural concerns** threaten the future of this **historic sacred space**.

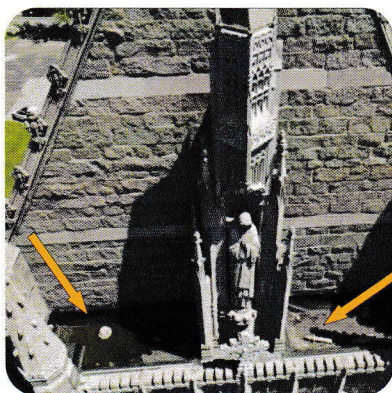
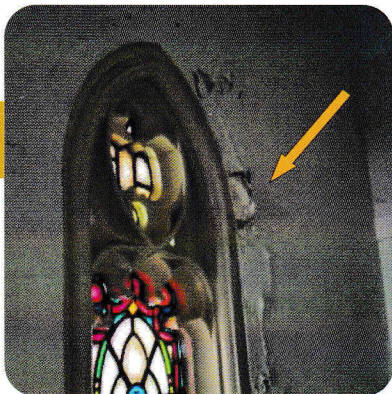


## A HISTORIC CHURCH IN NEED

While St. Mary continues to serve its community, **time and weather have taken a toll**.

Restoring St. Mary Church is about more than preserving a building—it is about **safeguarding a legacy of faith, culture, and community**. By restoring this sacred space to its original beauty and purpose, we honor the traditions and values of the families who built it, ensuring it remains a **beacon of faith and heritage for future generations**.

This project reflects our commitment to ensuring that **St. Mary continues to serve as a place of worship and spiritual renewal**.



### STRUCTURAL CHALLENGES

- + **Deteriorating Exterior:** Crumbling limestone, water infiltration, and structural weakening
- + **Aging Roof and Gutter System:** Persistent leaks threaten interior beauty and safety
- + **Worn Kneelers and Flooring:** More than a century of use has taken its toll
- + **Parking Lot and Accessibility Issues:** Poor lighting, cracked pavement, and drainage concerns
- + **Façade and Stone Restoration:** Replacing deteriorated limestone, precast stone, and mortar joints to maintain structural integrity
- + **Historic Accuracy:** Using detailed architectural surveys to guide repairs, ensuring the church is restored to its authentic, historic state



# PROJECT BUDGET & FUNDING BREAKDOWN

Exterior Repairs & Waterproofing .....	\$2,412,000
Roof Repairs & Leak Patching .....	\$148,000
Parking Lot & Lighting Upgrades .....	\$675,000
Engineering, Permits, & Testing .....	\$350,000
<b>Total Cost (Phase One) .....</b>	<b>\$3,585,000</b>

St. Mary is actively working to secure the \$3.585 million necessary to restore this sacred space. This will be accomplished through a combination of **property sales, parishioner contributions, and external support from Catholic leaders** who share our vision.

While much of the critically needed funding will come from within the parish, St. Mary is a mission parish with limited financial resources and **cannot achieve this alone**. We rely on the generosity of Catholic leaders beyond our immediate community—those who recognize the importance of **preserving sacred spaces that foster faith and service**. Your support will ensure that the physical beauty of St. Mary reflects the deep reverence and devotion of its people.

## REACHING OUR GOAL

*Restoring St. Mary's*

FUNDING SOURCES	AMOUNT
Sale of Parish Property .....	\$2,350,000
Parish Contributions .....	\$485,000
Leadership Donor's Matching Gift Challenge .....	\$250,000
Parish Community Goal .....	\$250,000
Community Leaders Goal .....	\$250,000
<b>Total Goal .....</b>	<b>\$3,585,000</b>

## JOIN THE LEADERSHIP CIRCLE

*Named Giving Levels*

We invite you to **prayerfully consider becoming a pillar of our restoration efforts** through a leadership gift at one of the following levels:

+ The Cornerstone Circle .....	\$100,000+
+ The Bell Tower Society .....	\$50,000+
+ The Sanctuary Guild .....	\$25,000+
+ Heritage Patrons .....	\$10,000
+ Faithful Stewards .....	\$5,000

## PROJECT TIMELINE

(Phase One Completion by 2026)

- + **Spring 2024** – Finalized contracts
- + **Summer 2024** – Begin exterior restoration work
- + **Fall 2025** – Complete waterproofing and roof repairs
- + **Spring 2026** – Finalize parking lot and lighting upgrades

Following the completion of exterior repairs and waterproofing, the church will need approximately two years to “breathe” before beginning the next phase of restoration.

**Phase Two, slated for 2027-2028, will focus on the interior restoration of the church**, ensuring the sacred space is fully revitalized for future generations.

## A \$250,000 MATCHING GIFT CHALLENGE

To encourage generosity among our parishioners, a generous donor has pledged a **\$250,000 matching gift challenge**, doubling every dollar raised by the St. Mary's parish community up to \$250,000. Given the financial challenges faced by our parish families, **this match ensures that every contribution, no matter the size, is maximized to its fullest impact.**

*Every donation makes a difference and is an investment in the spiritual and cultural future of Stamford.*





*“For where your treasure is,  
there your heart will be also.”*

- MATTHEW 6:21

---

**NOW IS THE TIME TO INVEST IN ST. MARY'S FUTURE**

*Join us in restoring this historic church—  
preserving its legacy and ensuring its beauty for generations to come.*